

# QUICK DELIVERY!

Finished  
Lower Level!



## THE OXFORD GRAND NEW ENGLAND

4 Tailor Lane Sicklerville, NJ 08081

Originally ~~\$211,598~~

You Save **\$4,608!**

# Now Priced \$206,990!

- 2,310 square feet
- 3 bedroom, 2 1/2 bathrooms
- Spacious open foyer
- Well-designed kitchen with upgraded cabinetry
- Walk-out, finished lower-level
- Large master suite with cathedral ceiling and walk-in closet
- Owner's bathroom includes double bowl vanity
- Community amenities include: clubhouse, pool, tennis courts, walking trails and more!
- Convenient to Philadelphia, Atlantic City, 95 & NJ Turnpike



(856) 728-5656



DECORATED MODELS OPEN MONDAY FROM 1-5 AND  
TUESDAY-SUNDAY FROM 10-5; Closed Wed & Thurs

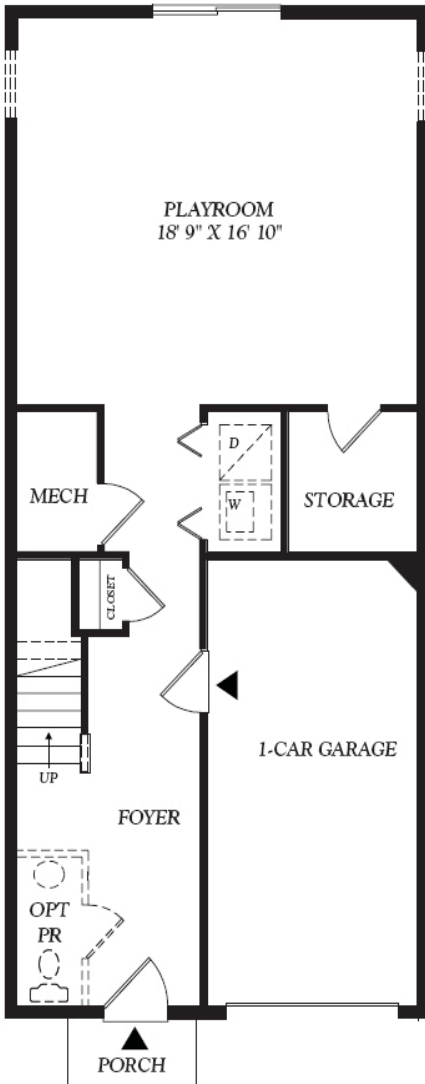
Directions from I-295 South or Walt Whitman Bridge/Ben Franklin Bridge: Take to Route 42 South to Atlantic City Expressway. Take Exit 41 (Berlin Cross Keys Road). Make a left off of ramp onto Berlin Cross Key Road. At 5th traffic light (Erial Road) make a right. Make a left onto Duchess Drive. Make a left on Meeting House Circle and turn left on Tavern Lane. Our sales center and model are on your right.



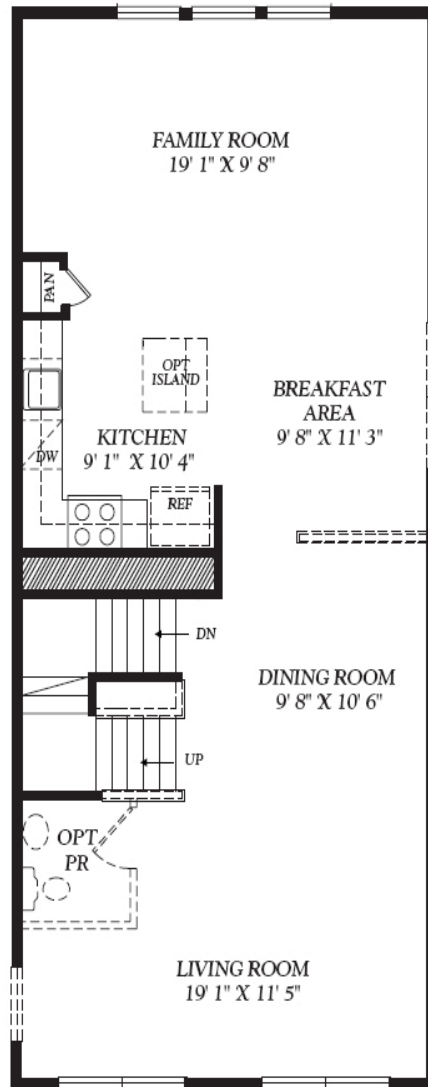
ChooseHeritage.com

Price subject to change without notice. All images are artist's renderings. Window sizes, styles and locations may vary. Some displayed features are optional. See salesperson for specific details.

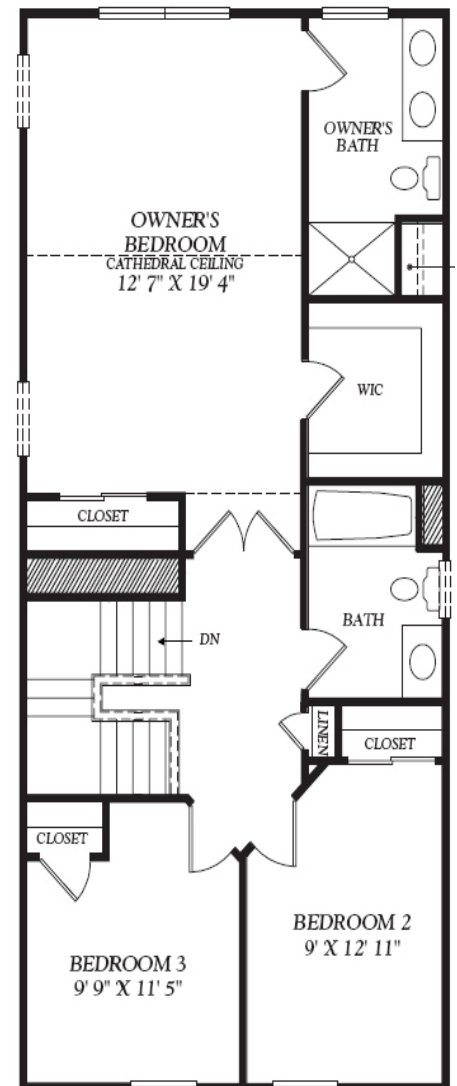
# THE OXFORD GRAND NEW ENGLAND!



Lower Level



Main Level



Upper Level