

Quick Settlement Home

NO
HOA FEES!



The Huntington Farmhouse - Homesite 192

Stunning Heritage built home on award-winning Lederach Golf Course. This home has the quality features and craftsmanship you would expect. Nine foot first floor and eight foot second floor ceilings. Chef-grade kitchens, spacious family rooms, spa-like owner's suite bathroom; large bedrooms. Minutes from the quaint town of Skippack and easily accessible to the PA turnpike. Souderton School District! No additional homeowner's association fees or membership fees!

- ~ Spacious 2,813 square foot home
- ~ Beautiful 1/3 acre homesite backing to open space
- ~ Welcoming two-story foyer with hardwood flooring
- ~ Gourmet kitchen with oversized island and built-in GE appliances
- ~ 200 square foot solarium
- ~ Spacious family room with gas fireplace
- ~ 4 spacious bedrooms with 2 1/2 baths
- ~ Luxurious owner's bedroom with two walk-in closets and retreat area
- ~ Lavish bath featuring a soaking tub with separate shower
- ~ 2-car side-entry garage
- ~ Full basement with 9' walls

\$455,715 Base Price + Options

(\$5,725) Quick Settlement Incentive

\$449,990 Offered Price

FOR MORE INFORMATION CONTACT PAM ROWE AT **(215) 513-4390**

951 Masters Way, Harleysville PA

Heritage
HOMES GROUP

HERITAGE
at LEDERACH GOLF CLUB

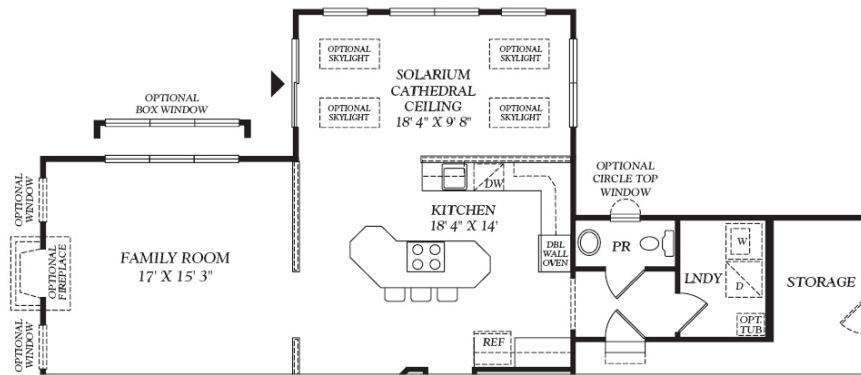
Directions: Pennsylvania Turnpike to New Extension (Rt. 476) to Exit 31, Lansdale. Turn right on Sumneytown Pike (Rt. 63). Continue on Sumneytown Pike for 3.7 miles to left on Rt. 113. Continue on Rt. 113 for 2.3 miles. Make right on Clubhouse Drive and continue to sales center on right.



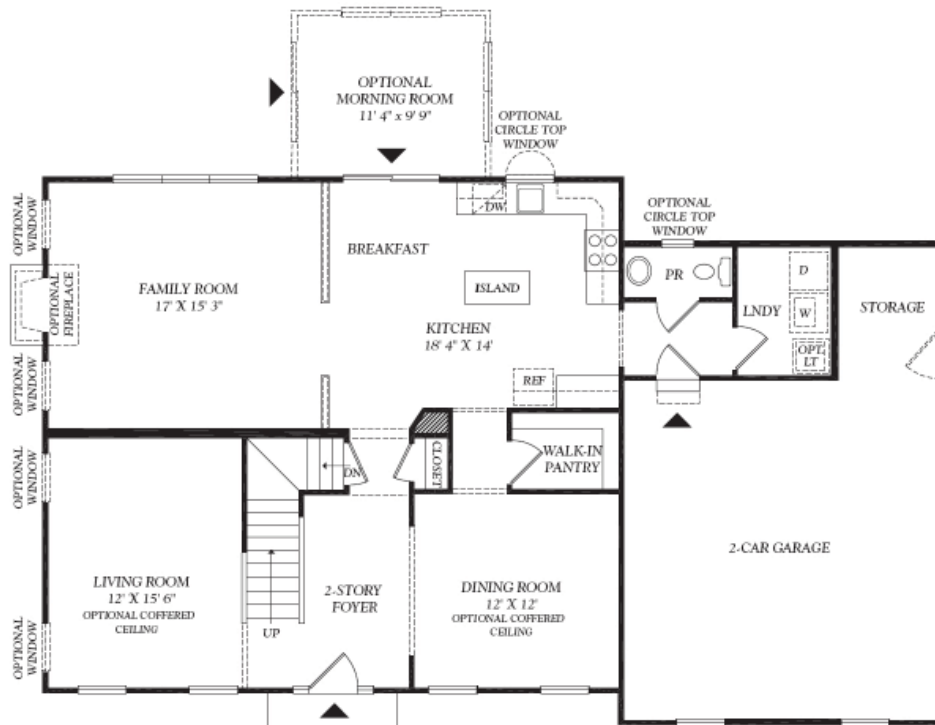
ChooseHeritage.com

The Huntington Farmhouse

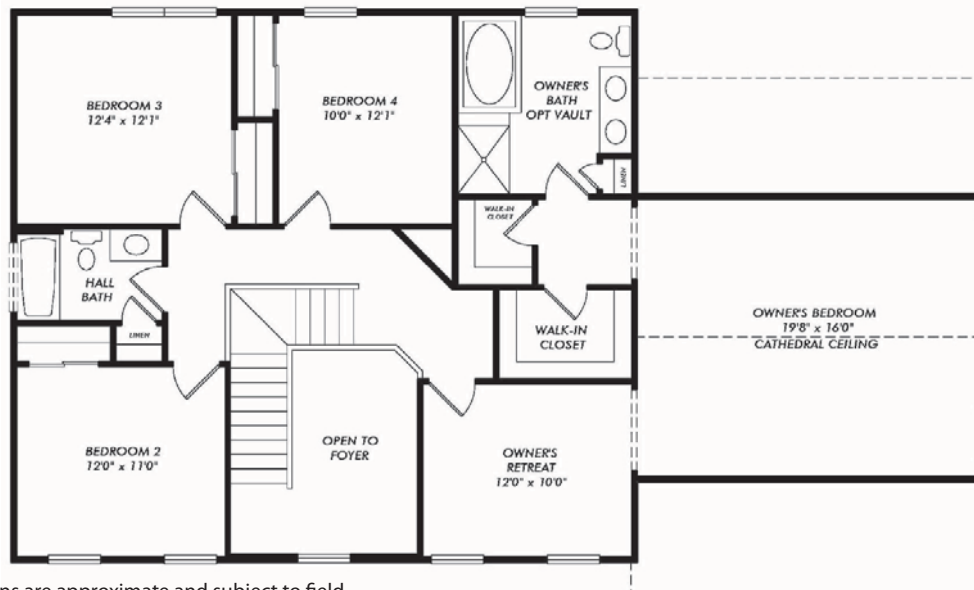
Includes
Solarium



First
Floor



Second
Floor



Note: All floorplans and dimensions are approximate and subject to field variations. Some will vary with alternate elevations. Subject to error, omissions and withdrawal.