

QUICK DELIVERY!

Clubhouse
with Pool!



THE OXFORD GRAND NEW ENGLAND

10 Candlestick Lane, Sicklerville NJ 08081

Originally ~~\$220,828~~

You Save \$4,838!

Now Priced \$215,990!

- 2,300 square foot
- 3 bedroom, 2 1/2 bathrooms
- Open foyer with hardwood flooring
- Spacious kitchen including upgraded cabinetry and center island
- Inviting family room
- Large owner's suite with walk-in closet
- Owner's bathroom includes double bowl vanity
- Numerous community amenities including pool, clubhouse, tot-lots, and walking trails



(856) 728-5656

DECORATED MODELS OPEN MONDAY FROM 1-5 AND TUESDAY-SUNDAY FROM 10-5

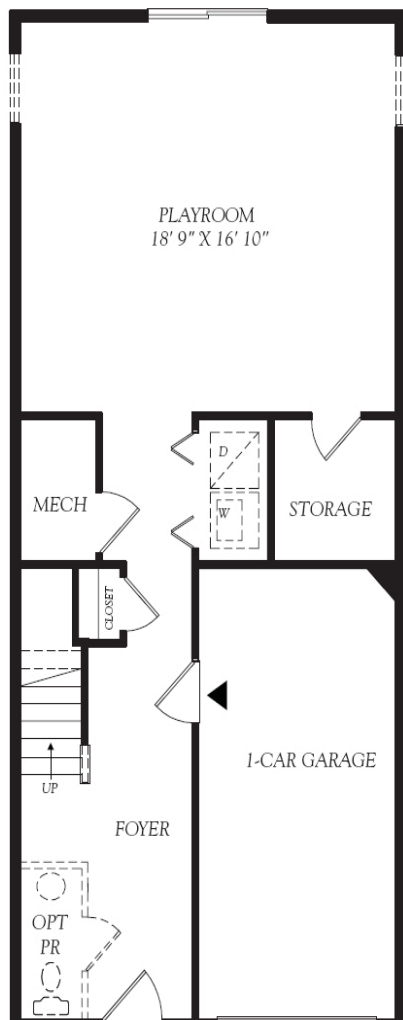
Heritage
HOMES GROUP

Directions: Take Rt. 42 S to AC Expressway. Take Exit 41. Make a left off of ramp onto Berlin Cross Keys Road. At 5th light make a right onto Erial-New Brooklyn Road, Rt. 706. Make a left onto Duchess Drive and another left onto Kelly Drive. Go straight to Candlestick Lane.

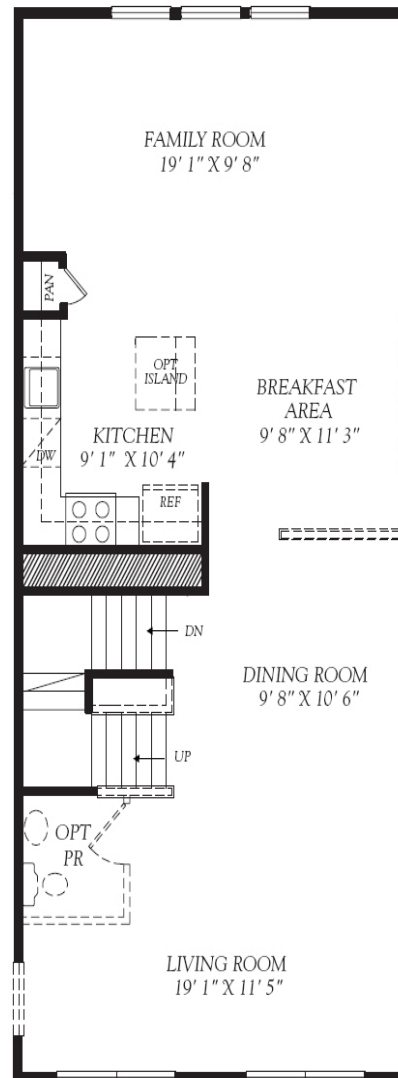


ChooseHeritage.com

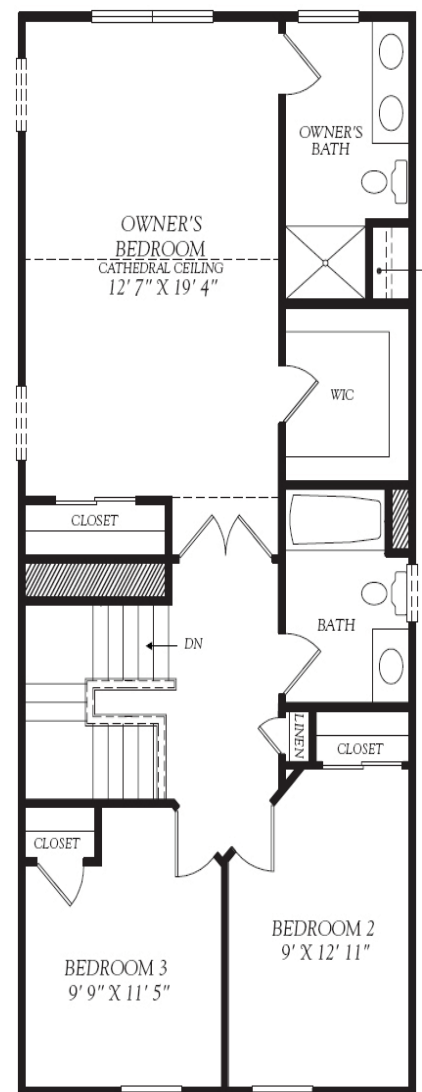
THE OXFORD GRAND NEW ENGLAND!



Lower Level



Main Level



Upper Level