

Quick Delivery Home

2214 Holly Drive, Gilbertsville, PA 19525



THE NEWPORT

SAVE
\$51,861!

Grand New England

Private cul-de-sac community with only 9 homesites!

- Spacious 2,954 sq. ft. home on over 1/3 acre home site
- 4 bedrooms, 2 full baths & 1 half bath
- 9' First Floor Ceilings
- Spacious kitchen with adjoining morning room
- Upgraded 42" maple cabinets
- Gorgeous 2-story Family room with fireplace and stone surround
- Majestic owner's suite with large retreat and walk-in closets
- Luxurious owner's bath with double bowl vanity
- 2 car side-entry garage
- Boyertown Schools
- Full, daylight basement

\$421,851 Base Price + Options
(\$51,861) Quick Delivery Incentive

\$369,900 Offered Price

FOR MORE INFORMATION CONTACT ED JENKINS AT **(610) 587-0236**

Heritage
HOMES GROUP

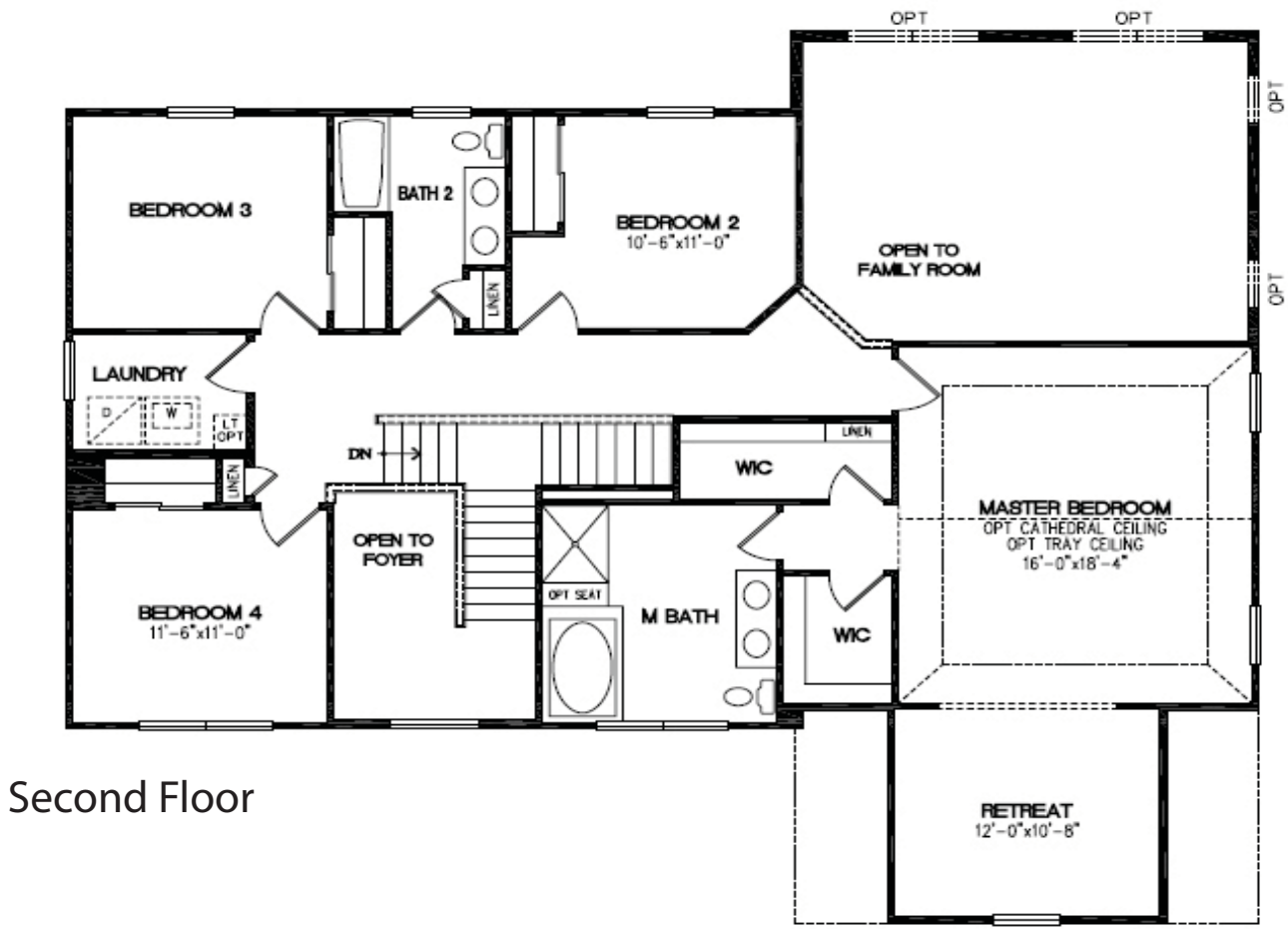
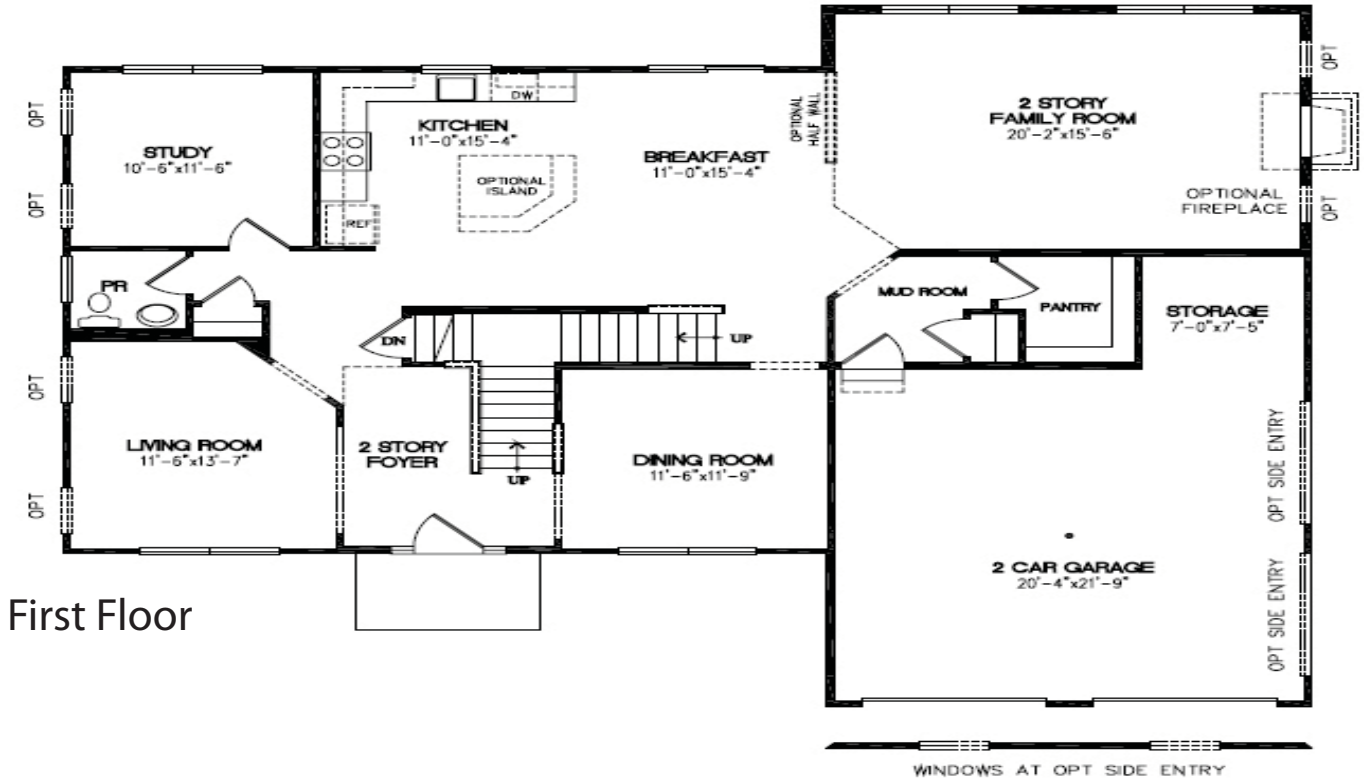
HANOVER
GREENE

Directions from 422 W : Take the Limerick exit, travel right onto Lewis Road. Follow about 1.5 miles to the Ridge Pike and make a right. At the first light Swamp Pike make a left and then travel 4.5 miles to Rosenberg Rd make a left and a quick right onto Holly Drive.



ChooseHeritage.com

The Newport Grand New England



FOR MORE INFORMATION CONTACT ED JENKINS AT (610) 587-0236
 2214 Holly Drive, Gilbertsville, PA 19525