

# Quick Settlement Home

Gourmet  
Kitchen with  
Solarium!



## The Huntington Farmhouse - Homesite 9

Stunning Heritage estate home in the highly sought after Royersford area. This home has the quality features and craftsmanship you would expect in a Heritage home as well as upgrades which make this home truly unique. Although privately tucked away by farmland and the surrounding Spring Ford Country Club, Country Club Estates is only minutes from quaint shopping towns and easily accessible to all major roadways. Spring-ford School District.

- Spacious 2,813 square foot home
- Beautiful 1/2 acre homesite in cul-de-sac
- 4 large bedrooms and 2 1/2 bathrooms
- Gourmet kitchen with stainless steel appliances and 42" kitchen cabinetry, granite tops
- Spacious and bright 200 sq. ft. solarium
- Hardwood in foyer, kitchen, solarium, and powder room
- Welcoming family room with gas fireplace
- Luxurious owner's suite with vaulted ceiling, two walk-in closets and expanded owner's retreat
- Lavish owner's bath featuring oversized soaking tub and stall shower, and double-bowl vanities
- Two car side-entry garage
- Full, walk-out basement with 9' walls, and powder room rough-in

**\$488,990 Offered Price**

CONTACT HILARY BENNETT-MAHON AND BECKY MACK AT **(610) 590-2183**  
36 PRESTWICK COURT, ROYERSFORD, PA 19468

*Heritage*  
HOMES GROUP

SPRINGFORD  
AT COUNTRY CLUB  
ESTATES

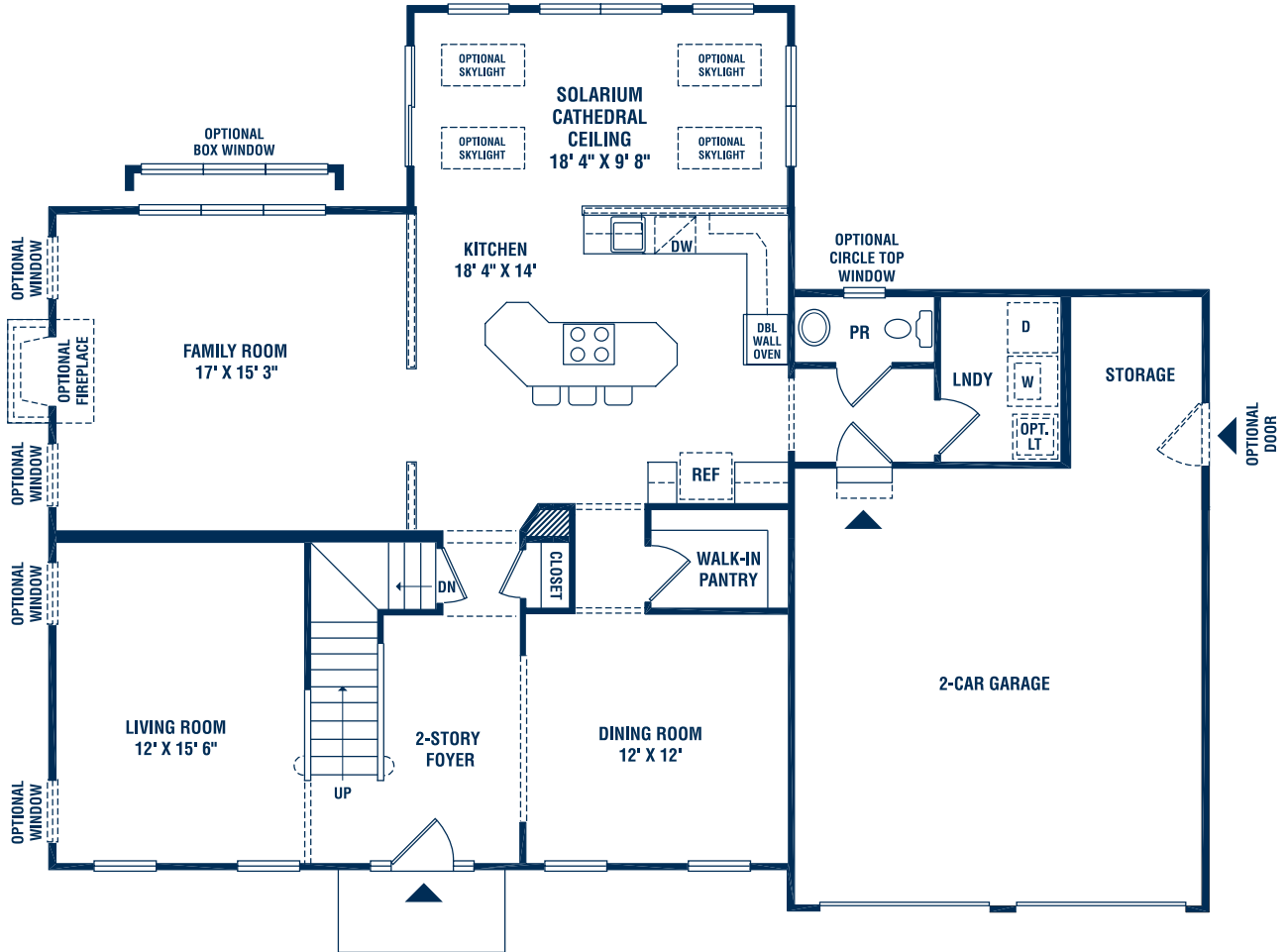
Directions from King of Prussia:  
Take Rt 422 West to Royersford exit. Bear right onto Township Line Road. Follow for 1.2 miles to left onto Linfield-Trappe Road. Travel for 1.3 miles to sales office on left.



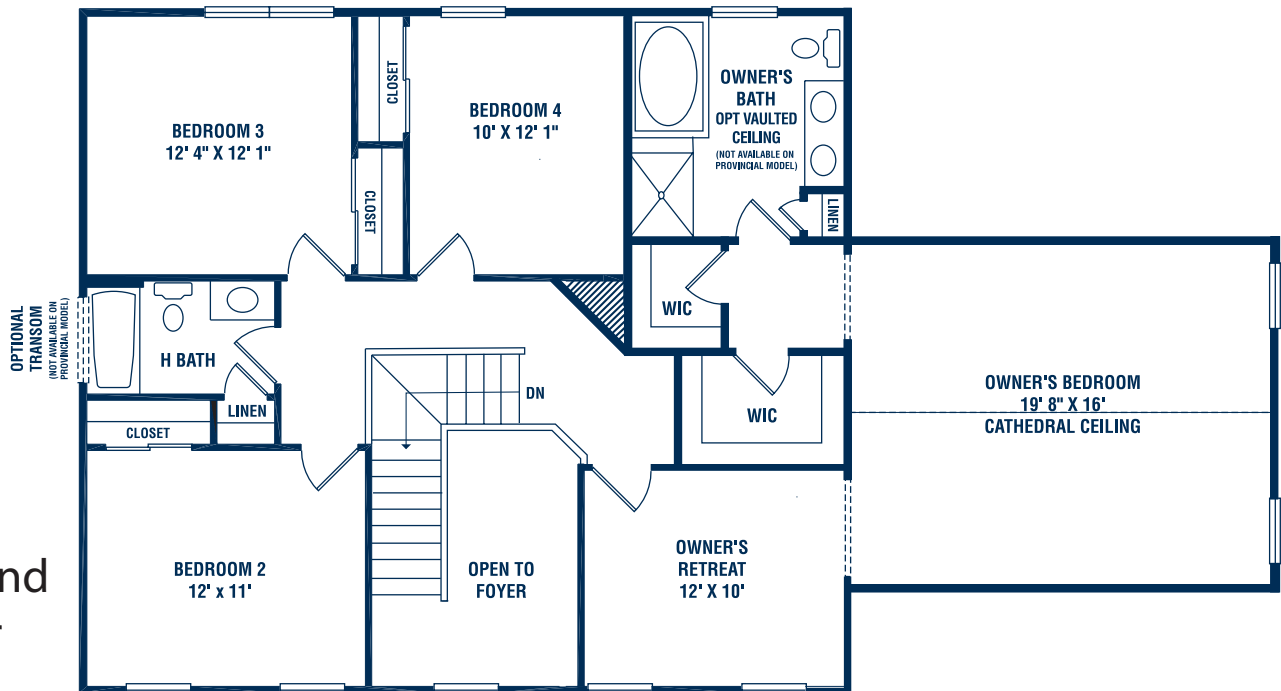
[ChooseHeritage.com](http://ChooseHeritage.com)

# The Huntington Farmhouse

First Floor



Second Floor



Note: All floorplans and dimensions are approximate and subject to field variations. Some will vary with alternate elevations, subject to error, omissions and withdrawal.