

Quick Settlement Home

NO
HOA FEES!



The Hampton Farmhouse - Homesite 121

- ~ Spacious 3,460 square foot home
- ~ Beautiful 1/3 acre homesite overlooking the 11th hole of Lederach Golf Course
- ~ 4 large bedrooms, 2 1/2 baths
- ~ Welcoming two-story foyer with hardwood flooring
- ~ Gourmet kitchen with granite tops, stainless steel appliances, and upgraded cabinets
- ~ Sunny, 200 square foot solarium
- ~ Family room with gas fireplace and Wall Of Windows
- ~ Luxurious owner's bedroom with two walk-in closets and expanded retreat area over the 3 car side-entry garage
- ~ Lavish bath featuring a soaking tub with separate shower and a private commode
- ~ Daylight basement
- ~ Full basement with 9' walls

\$651,251 Base Price + Options

(\$11,261) Quick Settlement Incentive

\$639,990 Offered Price

FOR MORE INFORMATION CONTACT PAM ROWE OR JUDY SOENTGEN AT **(215) 513-4390**
561 Championship Drive, Harleysville PA

Heritage
HOMES GROUP

HERITAGE
at LEDERACH GOLF CLUB

Directions: Pennsylvania Turnpike to New Extension (Rt. 476) to Exit 31, Lansdale. Turn right on Sumneytown Pike (Rt. 63). Continue on Sumneytown Pike for 3.7 miles to left on Rt. 113. Continue on Rt. 113 for 2.3 miles. Make right on Clubhouse Drive and continue to sales center on right.

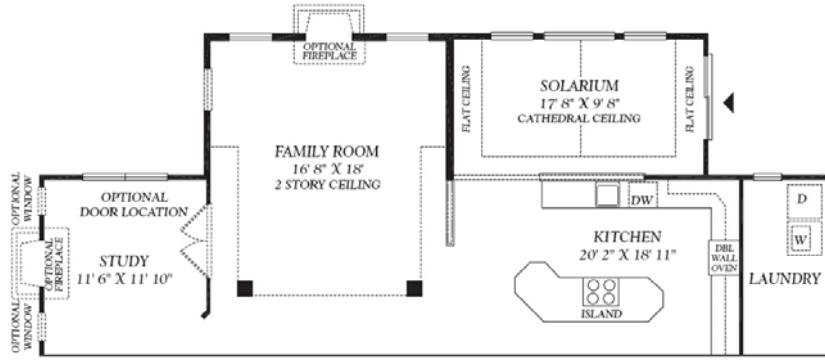


*photo depicts another completed Heritage Home.

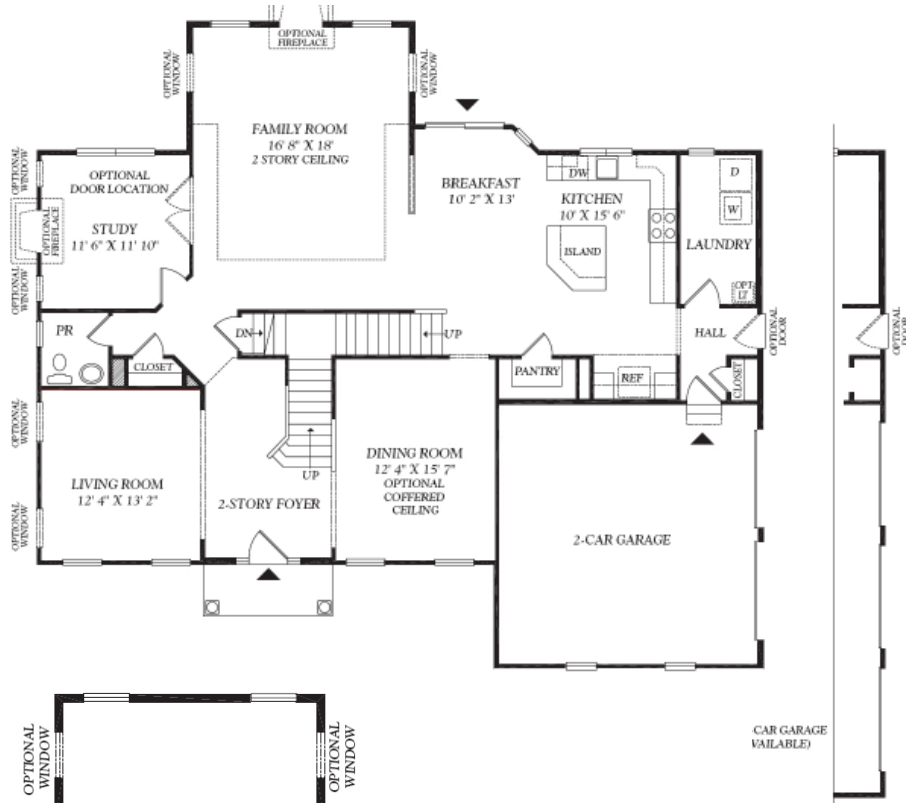
ChooseHeritage.com

The Hampton Farmhouse

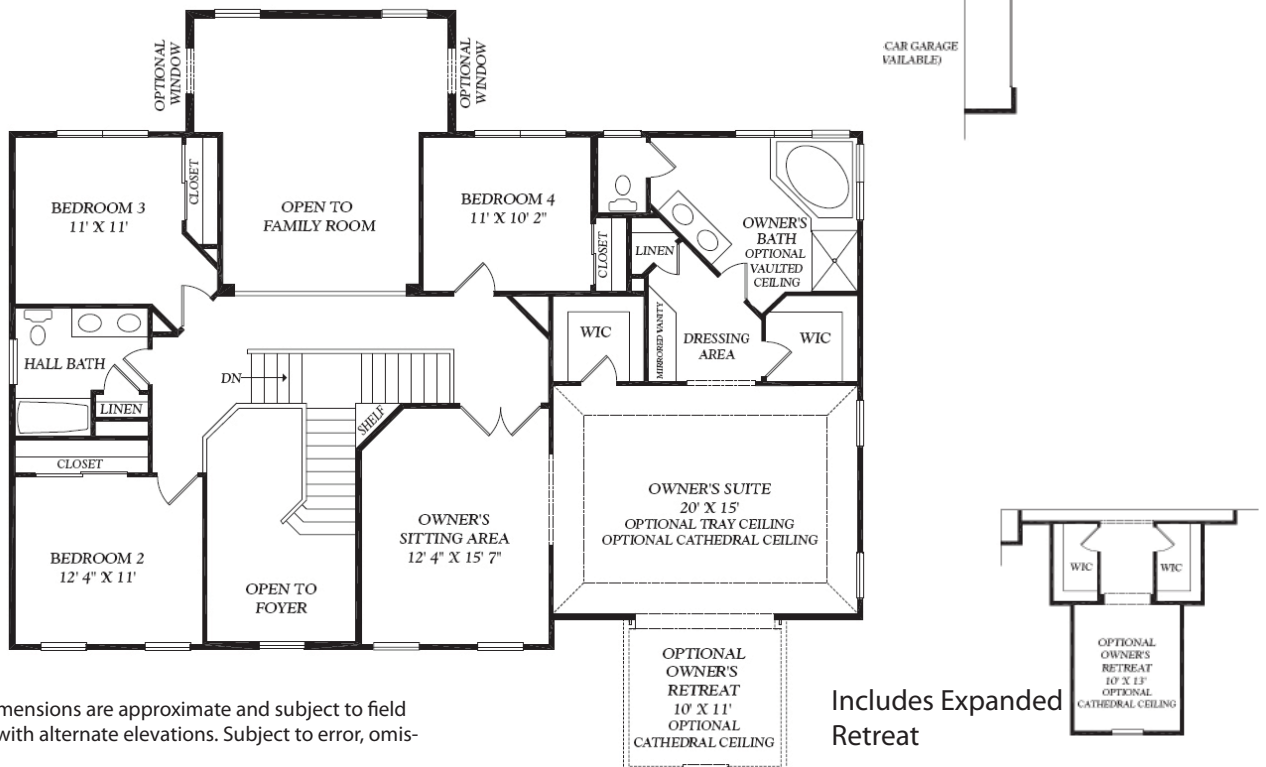
Includes
Solarium



First
Floor



Second
Floor



Note: All floorplans and dimensions are approximate and subject to field variations. Some will vary with alternate elevations. Subject to error, omissions and withdrawal.

Includes Expanded
Retreat

