

Quick Settlement Home

Gourmet
Kitchen with
Solarium!



The Greenwich Farmhouse

Stunning Heritage estate home in the highly sought after Royersford area. This home has the quality features and craftsmanship you would expect in a Heritage home as well as upgrades which make this home truly unique. Although privately tucked away by farmland and the surrounding Spring Ford Country Club, Country Club Estates is minutes from quaint shopping towns and easily accessible to all major roadways. Springford School District.

- Spacious 3,280 square foot home
- Beautiful 1/2 acre homesite backing to open space
- 4 bedrooms, 2 1/2 baths
- Gourmet kitchen with oversized island, upgraded 42" kitchen cabinetry, and granite countertops
- FREE, spacious 200 square foot solarium
- Large family room with gas fireplace
- Luxurious owner's suite with cathedral ceiling, two walk-in closets and a sitting area
- Lavish owner's bath featuring oversized soaking tub and stall shower, and a vaulted ceiling
- Three car side-entry garage
- Full basement with 9' walls, powder room rough-in and walk-up
- Stucco on all four sides of home
- Attractive rounded drywall corners
- Additional upgrades include main staircase with oak treads, upgraded ceramic tile flooring, upgraded trim

\$563,671 Base Price + Options

(\$3,681) Quick Settlement Incentive

\$559,990 Offered Price

FOR MORE INFORMATION CONTACT HILARY BENNETT-MAHON & BECKY MACK AT (610) 590-2183

147 TURNBERRY DRIVE, ROYERSFORD, PA 19468

Heritage
HOMES GROUP



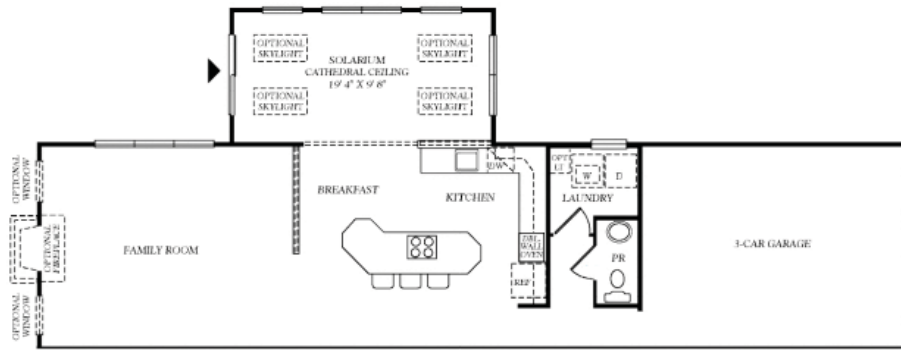
Directions from King of Prussia:
Take Rt 422 West to Royersford exit. Bear right onto Township Line Road. Follow for 1.2 miles to left onto Linfield-Trappe Road. Travel for 1.3 miles to sales office on left.



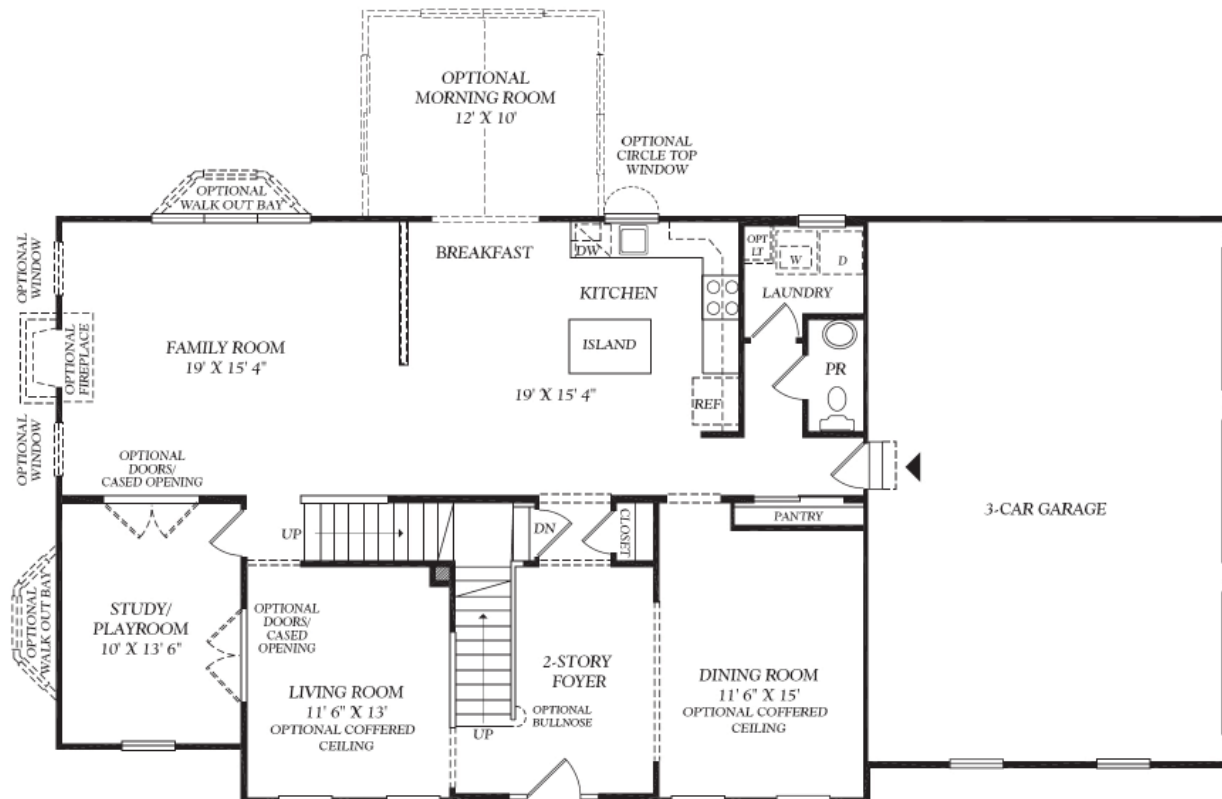
ChooseHeritage.com

The Greenwich Farmhouse

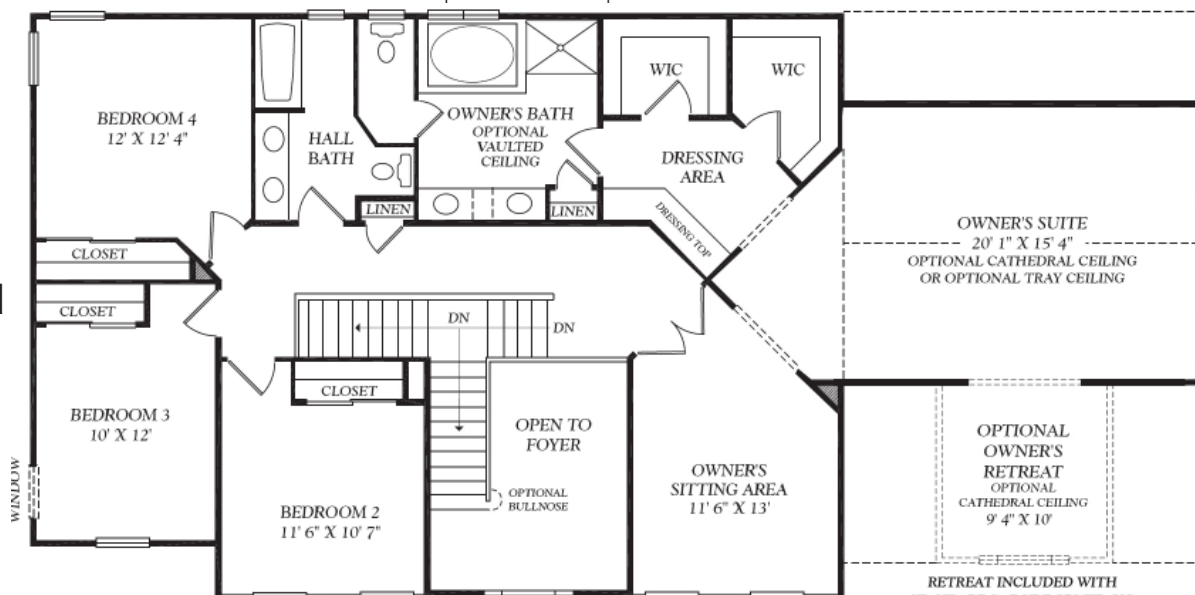
Includes Solarium



First Floor



Second Floor



RETREAT INCLUDED WITH STANDARD LARGE DORMER ON TRADITIONAL AND FARMHOUSE ELEVATIONS ONLY